

# Expanding Access to Supplemental Instruction through Online Tools



JOSEPH RUTLEDGE  
INSTRUCTIONAL TECHNOLOGY SUPPORT SPECIALIST

CHRISTOPHER JAZINSKI  
LEARNING MANAGEMENT SYSTEM SPECIALIST

CENTER FOR ONLINE LEARNING, TEACHING & TECHNOLOGY  
UNIVERSITY OF TEXAS PAN AMERICAN



## Presentation Goals



- What is Supplemental Instruction (SI)?
- SI challenges at universities with significant commuter student population
- Use of instructional technologies to support SI
- Overview of Pilot Program at UTPA



## What is Supplemental Instruction?

- Work with students in historically difficult courses
- SI Leaders...
  - Performed well in the course
  - Recommended by the instructor
- Provide weekly review sessions on concepts being reviewed in class
- Provide study strategies to strengthen student study habits and facilitate success
- Building student community



## Supplemental Instruction vs. Tutoring

SI Leaders	Tutors
Have taken course	May not have taken course
Required to Attend Class and take notes	Not required to attend class
Sessions include study skills, note taking, and learning strategies	Sessions are subject oriented
Evaluated on impact on student performance	Not evaluated on impact on student performance
Forms supportive study groups	Usually 1 on 1

Source: Learning Assistance Center UT-Pan American



## UT-Pan American Students

- 88% Hispanic Population
- 76% of Students employed while enrolled
- 90% live off campus or commute
- Average age at Graduation is over 26 yrs. old
- Less than 25% have parents with post H.S. degree
- 49% are 1<sup>st</sup> Generation College students

Source: The Office of Institutional Research & Effectiveness UT-Pan American



## Defining the Challenge

- Student population consisting of:
  - Commuters
  - First Generation College Students
  - Non-traditional Student Population
  - Some students may not have Appropriate Study Skills out of High School
- Raising Student Achievement in Historically difficult courses
- Many “At-Risk” Students are not able to attend SI Sessions outside of class hours



## Supplemental Instruction Needs



- Want to record SI Sessions for students who could not attend due to responsibilities that go beyond the classroom
- Training for Online Tools
- Technology to Facilitate SI needs



## Pilot Program



- Learning Assistance Center Provided
  - Most seasoned SI Leaders
- COLTT provided
  - Blackboard courses specifically for SI leaders and students
  - Computer with all COLTT supported software
  - Document camera and digital tablet
  - Lecture capture (asynchronous)
  - Web-conferencing (synchronous)
  - Training in all of these online learning tools



## Blackboard Tools

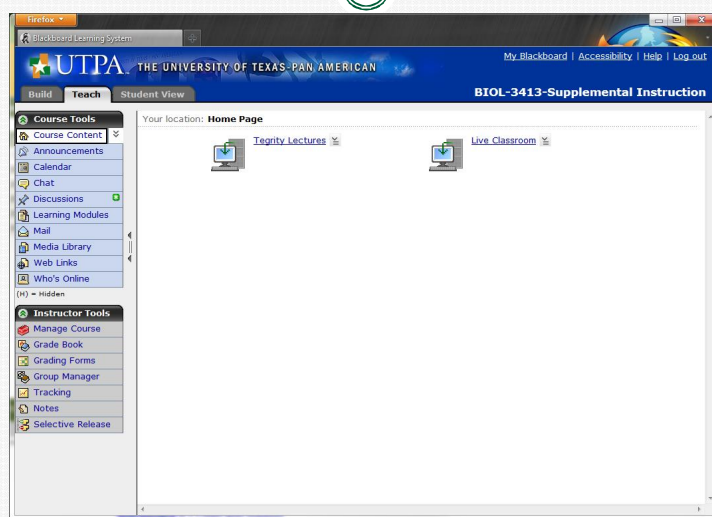
- SI course specific email
- Upload Relevant Documents
- Simulated Quizzes
- SI Specific Assignments
- Discussion Boards



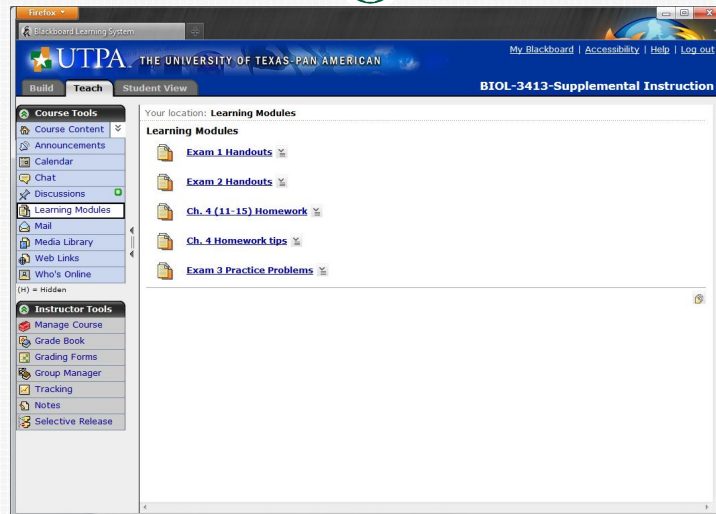
Blackboard



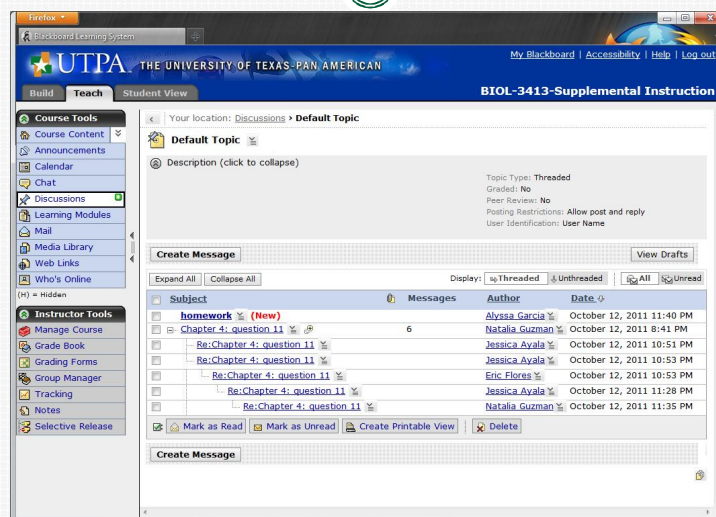
## Blackboard



# Blackboard



# Blackboard



## Lecture Capture

- Ability to record sessions for students who cannot attend due to responsibilities outside the classroom
- Ability to link recorded lectures to Blackboard for easy access for students
- Records from Computer Desktop, Document camera and digital tablet



## Lecture Capture

The image displays a lecture capture session. The main window shows a web browser with a statistics course page titled "Statistics 3: Hodges University". The page content includes a "Powered by begrity" logo and a list of "Bookmarks and Notes" with timestamps: 0:13:48 When to find inverse T, 0:13:47 Rejection region in tail, and 0:17:20 Standardized test statistic calculated. The central part of the screen shows a document camera view of a whiteboard with handwritten notes:  $H_0: \mu > 1$ ,  $n=13$ ,  $\bar{x}=1.9$ ,  $s_x=0.2$ ,  $\alpha=.05$ , claim mean  $\mu > 1.30$ , and T-test p.p. Normal. To the right of the whiteboard is a TI-84 Plus calculator. Two tablets are shown in the foreground, one displaying a calendar and the other displaying the same whiteboard content as the document camera.

## Wimba Live Classroom

- Synchronous online session
- Students can participate in the session similar to classroom sessions
- Ability to display documents and PowerPoint presentations
- Direct Feedback from students



## Wimba Live Classroom



Welcome to  
'PHIL2330LOVE'

Archive : Stopped

Content | Breakout Rooms

Web | eBoard | Share

Default Content Folder | Go

Reset Content Frame

Note: This folder does not have any slide content.

Archive Reminder

Do you want to archive this presentation?

Yes No

TALK

People (1)

Merlene\_Love

To: Main...





## Moving Forward

- Greater participation of SI leaders in Fall 2012
  - Fall 2011 - 3 SI Leaders
  - Spring 2012 – 8 SI Leaders
- Full participation of SI leaders by Spring 2013
  - Fall 2011: 72 SI Courses with 4592 Students Enrolled
- Provide more computers and equipment to support SI Leaders



## Fall 2011 Statistics

Course	American History		Genetics	
	SI	Non-SI	SI	Non-SI
Pass Rate	81%	60%	83%	23%
Avg. Final Grade	3.02	2.30	2.62	0.88
<b>Difference</b>	<b>0.72</b>		<b>1.74</b>	



## Student Feedback



- “I think blackboard is helpful. It provides a lot of information and is a great testing tool. Communication is much easier.”
- “Sandi's use of Blackboard is a total lifesaver!”
- “I now have a 90+ average in Genetics course, and I am not the smartest of all kids. Thank you for Sandi and Blackboard.”
- “I believe this blackboard page is very useful. It is really convenient because most students already check their blackboard on a daily basis.”



## Student Feedback



- “I like that you made this method of communication available. It is helpful because everything you post in blackboard makes it easier for us. All the problems are great practice for the exams. it also makes it easier to contact classmates since (*My instructor*) does not use blackboard.” – *L. M.*



## Questions

